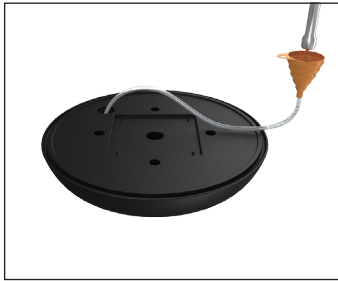
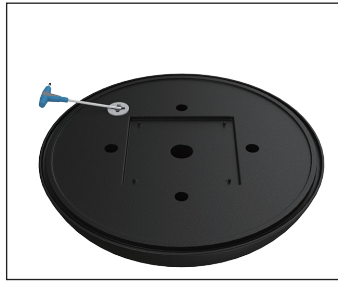


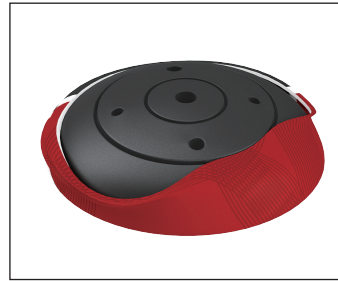
# Setup Instructions



1. Use provided funnel to add water to the base.



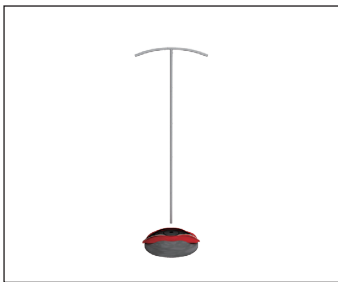
2. Tightly screw in the plastic washer to prevent leaking.



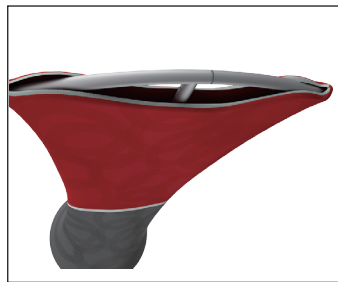
3. Assemble the fabric on the base by feeding the silicone edge into the grooves.



4. Take the aluminum pipes out and assemble, and they are all cored.



5. Attach the uni-pole to the Bubble base.



6. Now lift the fabric print to the top, tilting the stand towards you will make it easy. Stretch the fabric over the sides without putting lots of tension over the zipper.



7. Enjoy!

